



GIG  
CYMRU  
NHS  
WALES

Y Weithrediaeth  
Executive

National Strategic Clinical Network  
Child Health

**What can we all do for the  
children of Wales?**

Dr Claire Thomas, Clinical Lead  
Sarah Hooke, Network Support Manager

WPS: 8/11/24

# NHS Executive...

**NHS Executive Programme  
was born from a Commitment in  
'A Healthier Wales' (2018)  
in response to the Parliamentary  
Review**



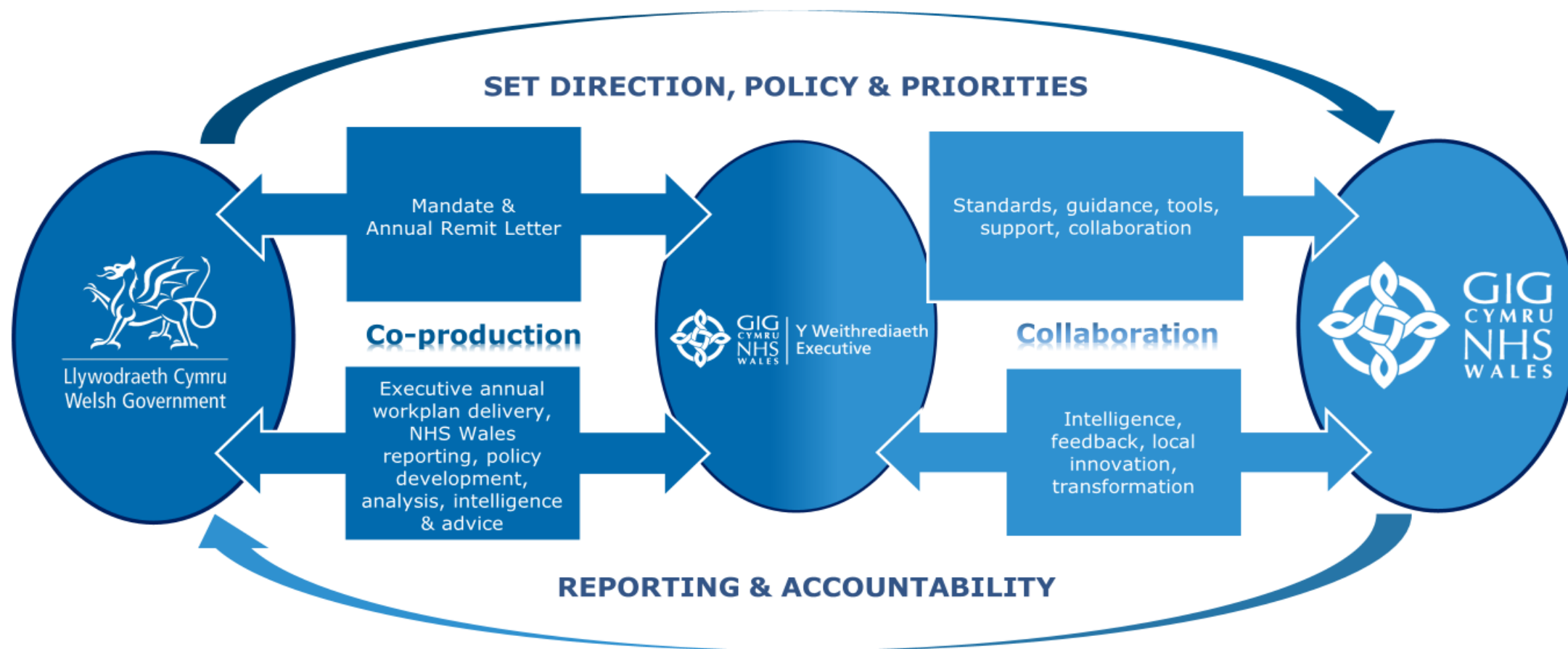
# NHS Executive Purpose...

**To drive improvements in the quality and safety of care:**

- Better and fairer outcomes, access and patient experience
- Reduce variation
- Improve population health

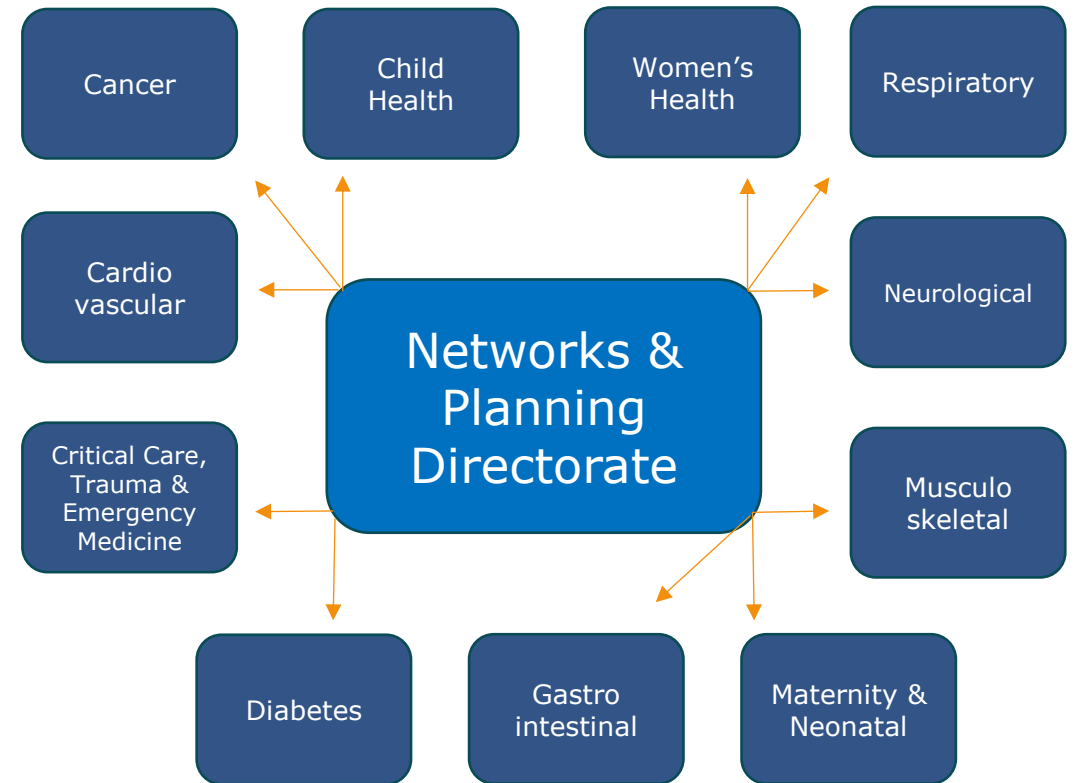
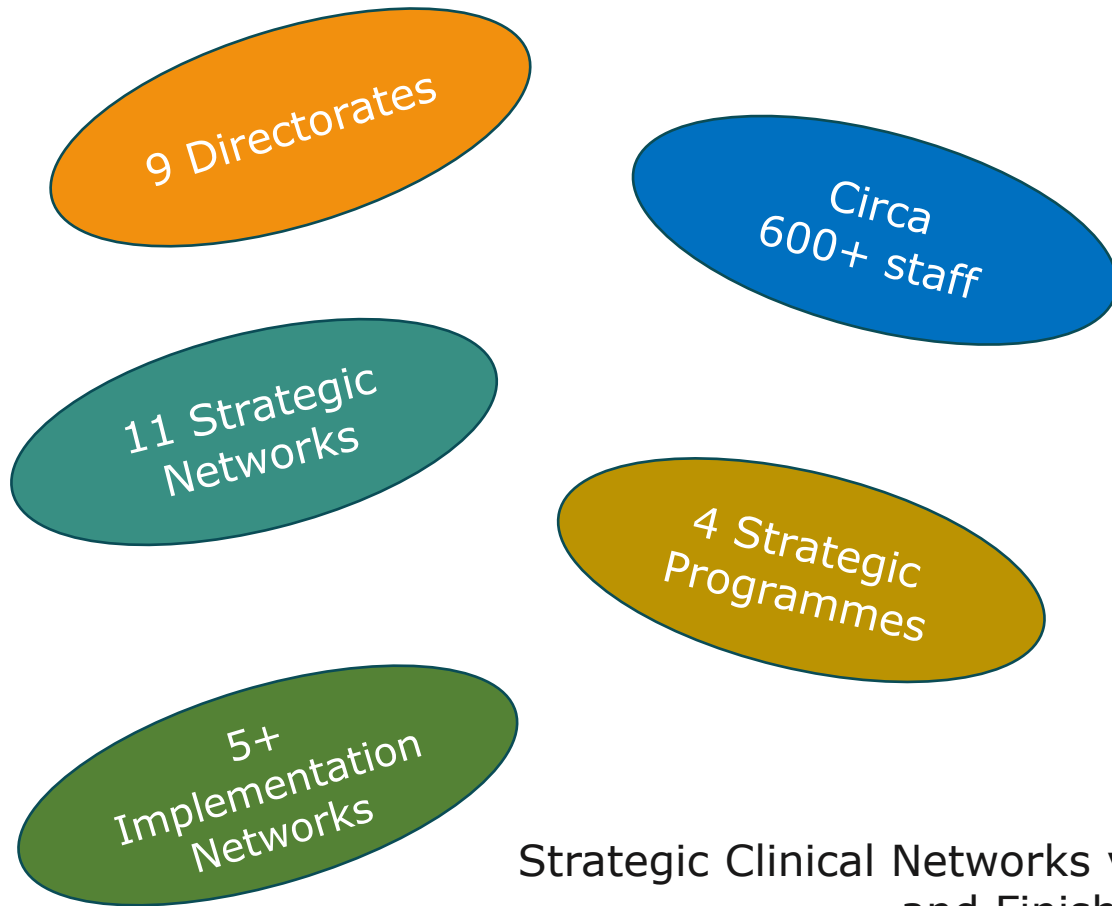


# NHS EXECUTIVE ON A PAGE



Providing a *central guiding hand*, working in partnership *for* and on *behalf* of Welsh Government *in* and *with* the NHS in Wales

# NHS Executive Structure...



Strategic Clinical Networks vary in maturity and support Communities of Practice, Tasks and Finish Groups and Implementation Networks within each Network

# Strategic Clinical Networks...

## Networks are defined in relation to:

- Major conditions
- Categories of service (e.g. maternity and neonatal care)
- Target population



**Providing direction**  
through quality  
statements



**Secure outcomes**  
through providing  
national standards and  
informing the NHS Exec.  
of variation through  
robust data and  
stakeholder engagement



**Understanding the  
population** and  
recognising inequalities  
and solutions via  
standardisation and  
regional working



**Value based approach**  
considering whole  
pathways



**Join up** across system  
within Exec and delivery  
partners (e.g. HEIW)

# Child Health Strategic Network...

**Work together with clinical colleagues across all health boards, with Welsh Government, children, young people, and their families to provide efficient, equitable early interventions and preventative measures to improve and maintain the highest quality of health for all children across Wales, giving them the best start and support throughout their early years.**



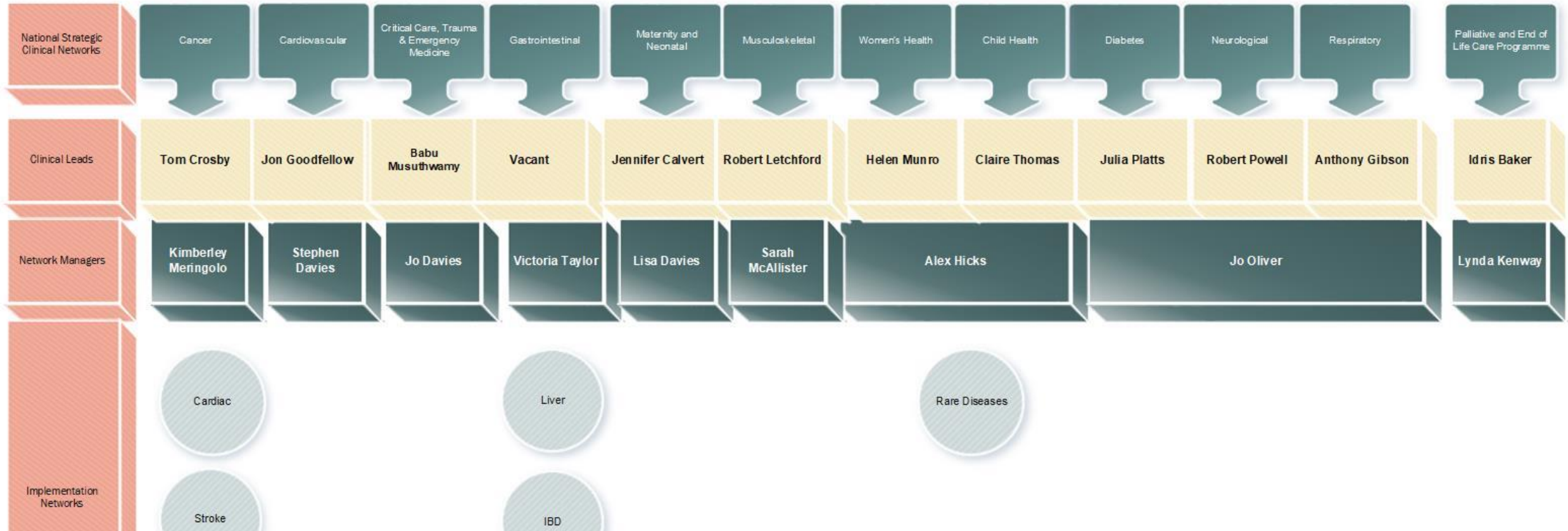


# NHS Executive

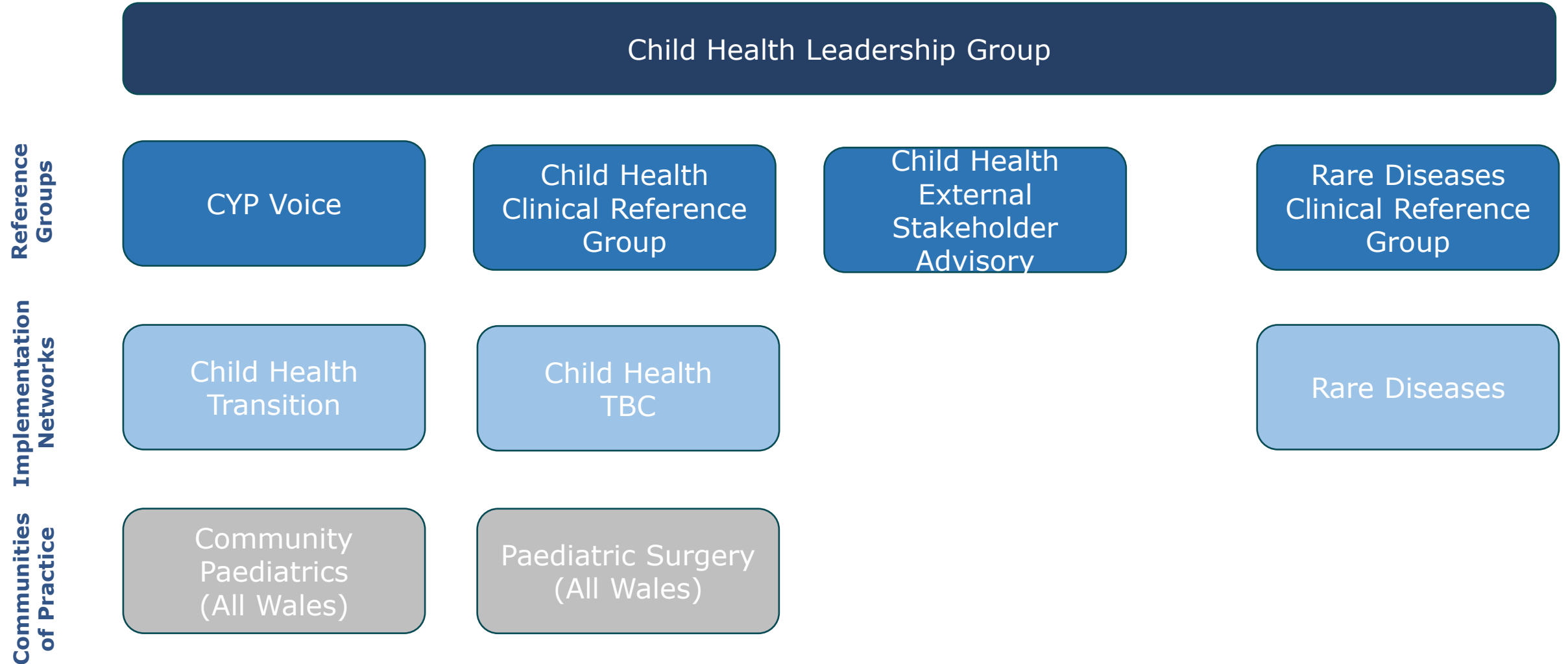
**Mark Dickinson**  
National Director of Networks

**Meinir Jones**  
National Clinical Director

**Joanna Williams**  
Deputy Director of Networks



# Child Health Structure...



# Roadmap...

## Jan – March 2025

Collaborating with stakeholders to set Annual Plan 25/26 and establishment of CYP Reference Group.

**April 2025**  
Creation of 3-year Strategic Plan.

**Ongoing**  
Establishment of Communities of Practice, Task & Finish Group and Implementation Networks.

## May – Dec 2024

Stakeholder engagement (Welsh Government, Health Boards, strategic partners).

**Sept – Dec 2024**  
Setting 2024/25 Annual Plan priorities, establishing Child Health Leadership Group and Clinical Reference Group.

# Child Health 24/25... Ongoing Work



## The Transition and Handover Guidance

## Transition

February 2022



# Child Health 24/25... Ongoing Work



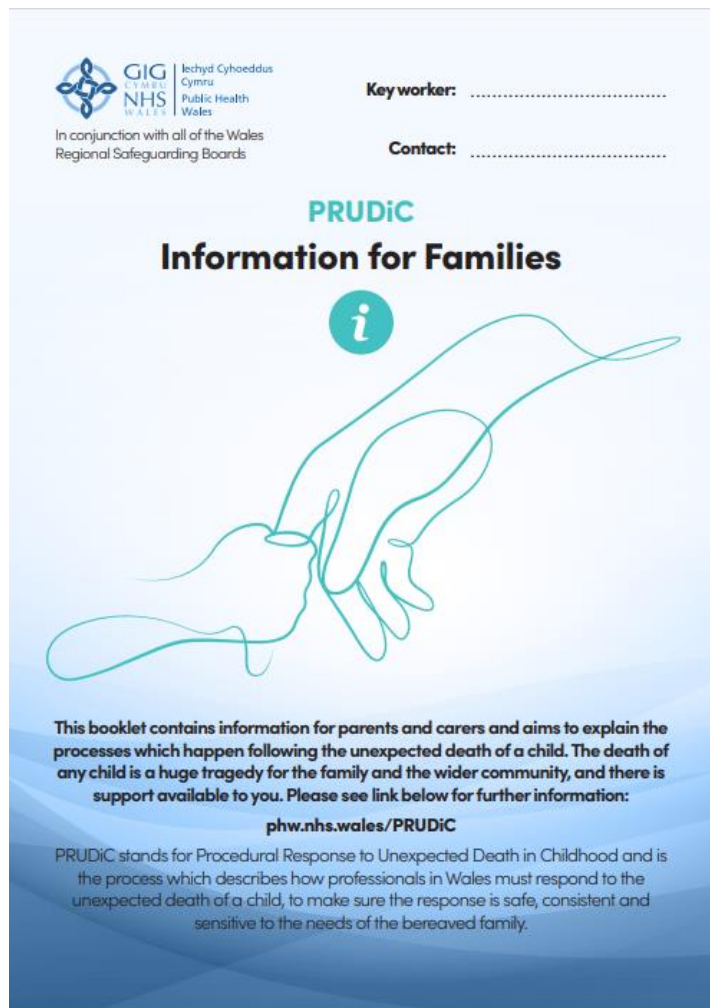
Waiting Lists

# Child Health 24/25... Ongoing Work



Voice of the Child

# Child Health 24/25... Ongoing Work



The image shows the cover of a booklet titled 'PRUDiC Information for Families'. At the top left is the GIG Cymru NHS Wales logo with the text 'Iechyd Cyhoeddus Cymru Public Health Wales' and 'In conjunction with all of the Wales Regional Safeguarding Boards'. To the right are fields for 'Key worker:' and 'Contact:'. The title 'PRUDiC Information for Families' is centered, with a teal 'i' icon above a line-art illustration of two hands holding each other. Below the illustration is a paragraph of text explaining the booklet's purpose and providing the website [phw.nhs.wales/PRUDiC](http://phw.nhs.wales/PRUDiC). At the bottom, a definition of PRUDiC is provided.

**GIG Cymru NHS Wales** | Iechyd Cyhoeddus Cymru Public Health Wales  
In conjunction with all of the Wales Regional Safeguarding Boards

**Key worker:** .....

**Contact:** .....

**PRUDiC**  
**Information for Families**

**i**

This booklet contains information for parents and carers and aims to explain the processes which happen following the unexpected death of a child. The death of any child is a huge tragedy for the family and the wider community, and there is support available to you. Please see link below for further information:  
[phw.nhs.wales/PRUDiC](http://phw.nhs.wales/PRUDiC)

PRUDiC stands for Procedural Response to Unexpected Death in Childhood and is the process which describes how professionals in Wales must respond to the unexpected death of a child, to make sure the response is safe, consistent and sensitive to the needs of the bereaved family.

## Child Death in Wales

# Child Health 24/25... Ongoing Work



The poster features a blue background with a rainbow in the top right corner and a smiling sun on the left. At the top left is the GIG Cymru NHS Wales logo and the text 'Y Weithrediaeth Executive'. The main title is 'What everyone in the NHS can do about Children's ORAL HEALTH'. Below this, it states the webinar is hosted by Dr. Claire Thomas with guest speaker Professor Andrew Dickenson. Two speech bubbles at the bottom provide the date and time, and a 'Did you know?' fact about tooth decay. A cartoon tooth and toothbrush are at the bottom right.

**GIG Cymru NHS Wales** | Y Weithrediaeth Executive

The **Child Health Network** Presents  
a Webinar on..

What everyone in the NHS  
can do about Children's  
**ORAL HEALTH**

Hosted by the Child Health Clinical Lead and  
Consultant Paediatrician Dr. Claire Thomas  
with guest speaker Professor Andrew  
Dickenson – Chief Dental Officer for Wales

**December 12th 2024**  
13:00- 14:00  
on Microsoft teams

Did you know?  
32.4 percent of Children  
reach they age of 5 with  
Tooth Decay

Child Health: Webinar Series  
'What everyone in the NHS can do about children's...'  
**Oral Health 12<sup>th</sup> December 2024**



# Child Health 24/25... Supporting Work

- Inform the development of Welsh Government Integrated Quality Statement for Child Health
- PEWS (Paediatric Early Warning Systems)
- Paediatric Surgery
- Internal collaboration (Strategic Networks and National Programmes)
- ...

# Child Health... Together

- Clinical Reference Group
- External Advisory Group
- Child Voice
- NHS
- Annual Workplan (25/26)
- Strategic Plan





**GIG**  
CYMRU  
**NHS**  
WALES

# Y Weithrediaeth Executive



**Dr Claire Thomas**  
Clinical Lead  
claire.thomas22@wales.nhs.uk



**Alex Hicks**  
Network Manager  
Alex.hicks@wales.nhs.uk



**Sarah Hooke**  
Network Support  
Manager  
Sarah.hooke3@wales.nhs.uk



**Rosie Lennon**  
Senior Project  
Support Officer  
rosie.lennon2@wales.nhs.uk

# A Wales for All Children



GIG  
CYMRU  
NHS  
WALES

Y Weithrediaeth  
Executive